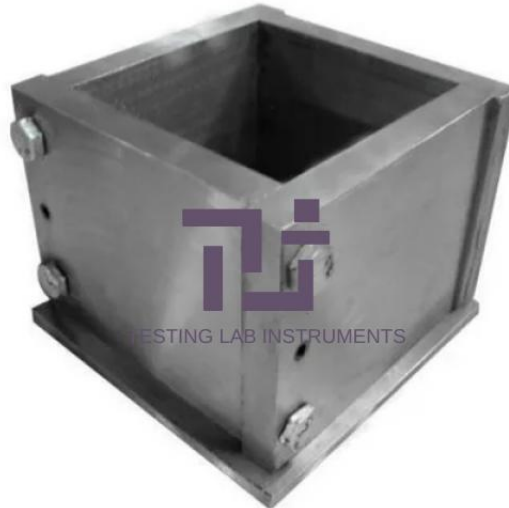


**Product Name :**  
Cube Mould (70.6 mm) With I.S.I Mark

**Product Code :**  
TEST5058RFQLAB-0002



**Description :**

Cube Mould 70.6 mm With I.S.I Mark, Cube Mould (150 mm) With I.S.I Mark for Testing Lab Equipment Tender Suppliers India

**Technical Specification :**

These Cube moulds are made of steel. The tolerance between faces is maintained at  $\pm 0.1$  mm and planeness is  $\pm 0.03$  mm. Cube Moulds carry ISI mark.

Cube Mould made of cast iron having an internal size of 150mm with a tolerance of  $\pm 0.2$  and planeness of  $\pm 0.03$  mm. Cube Moulds are ISI Marked.

We are a leading manufacturers of Cube Mould (70.6 mm) With I.S.I Mark testing equipment for a range of industries, including materials science testing lab. We offer full range of Cube Mould (70.6 mm) With I.S.I Mark testing equipment, including Cube Mould (70.6 mm) With I.S.I Mark testing kit, Cube Mould (70.6 mm) With I.S.I Mark testing machine, Cube Mould (70.6 mm) With I.S.I Mark testing tools, Cube Mould (70.6 mm) With I.S.I Mark test equipment, Cube Mould (70.6 mm) With I.S.I Mark test machines, Cube Mould (70.6 mm) With I.S.I Mark for Lab Testing Instruments. We are suppliers of materials testing tools and equipment for the construction industry. Our mission is to provide reliable, accurate, and easy-to-use Cube Mould (70.6 mm) With I.S.I Mark testing equipment that helps customers build better, safer, and more sustainable infrastructure.

---

# Testing lab instruments India

